

**The di Rosa site was subject to a
project by the
Works Progress Administration,
can you guess what it was?**



WHAT PROJECT WAS CARRIED OUT BY THE WPA AT DI ROSA?



Building the stone barn/
residence



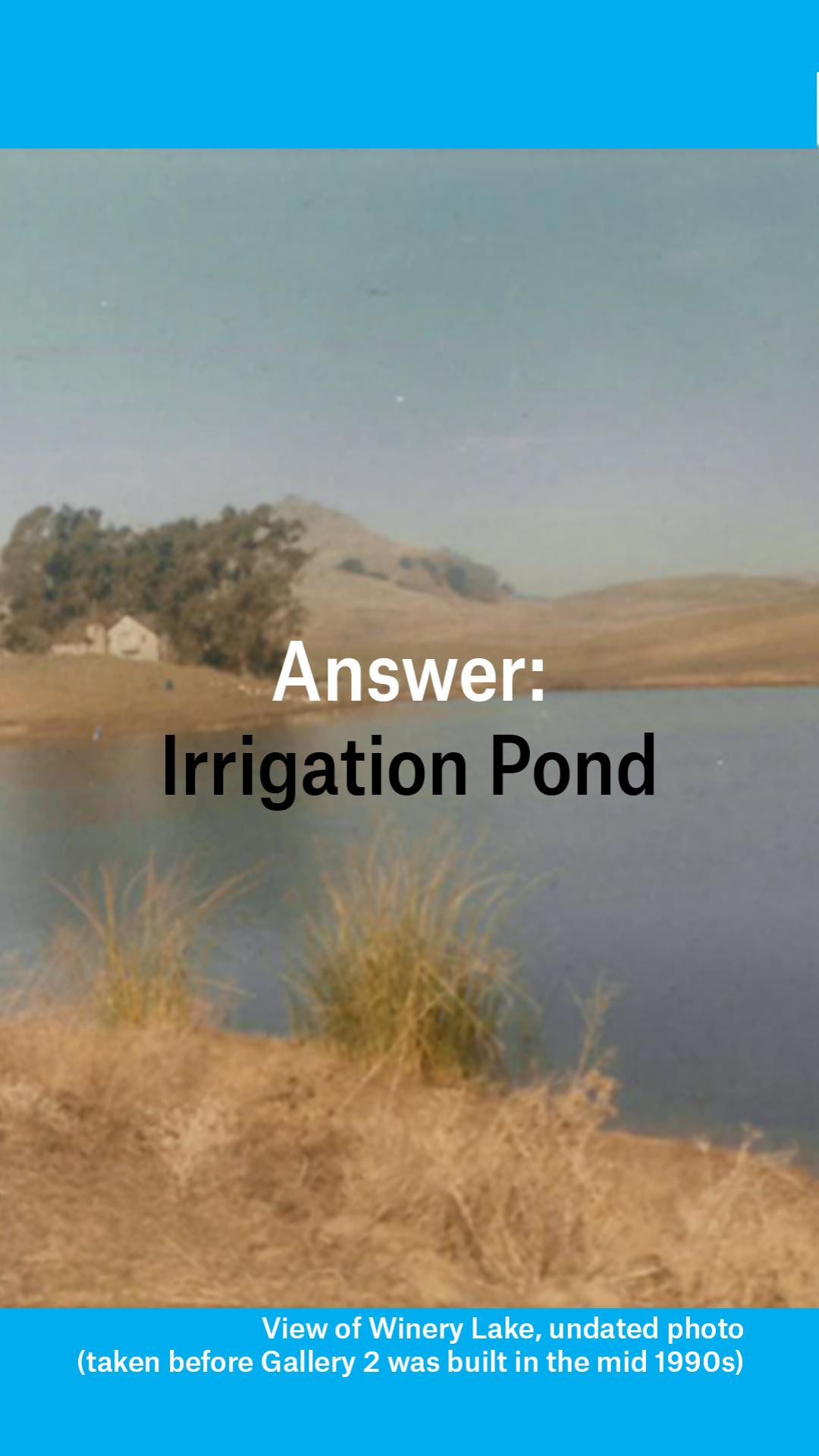
Concrete road construction



Forming of an irrigation pond



A mosaic depicting
agricultural workers



Answer: **Irrigation Pond**

View of Winery Lake, undated photo
(taken before Gallery 2 was built in the mid 1990s)



Itinerant laborer, Napa County, 1938.
Photo by Dorothea Lange, Library of Congress.

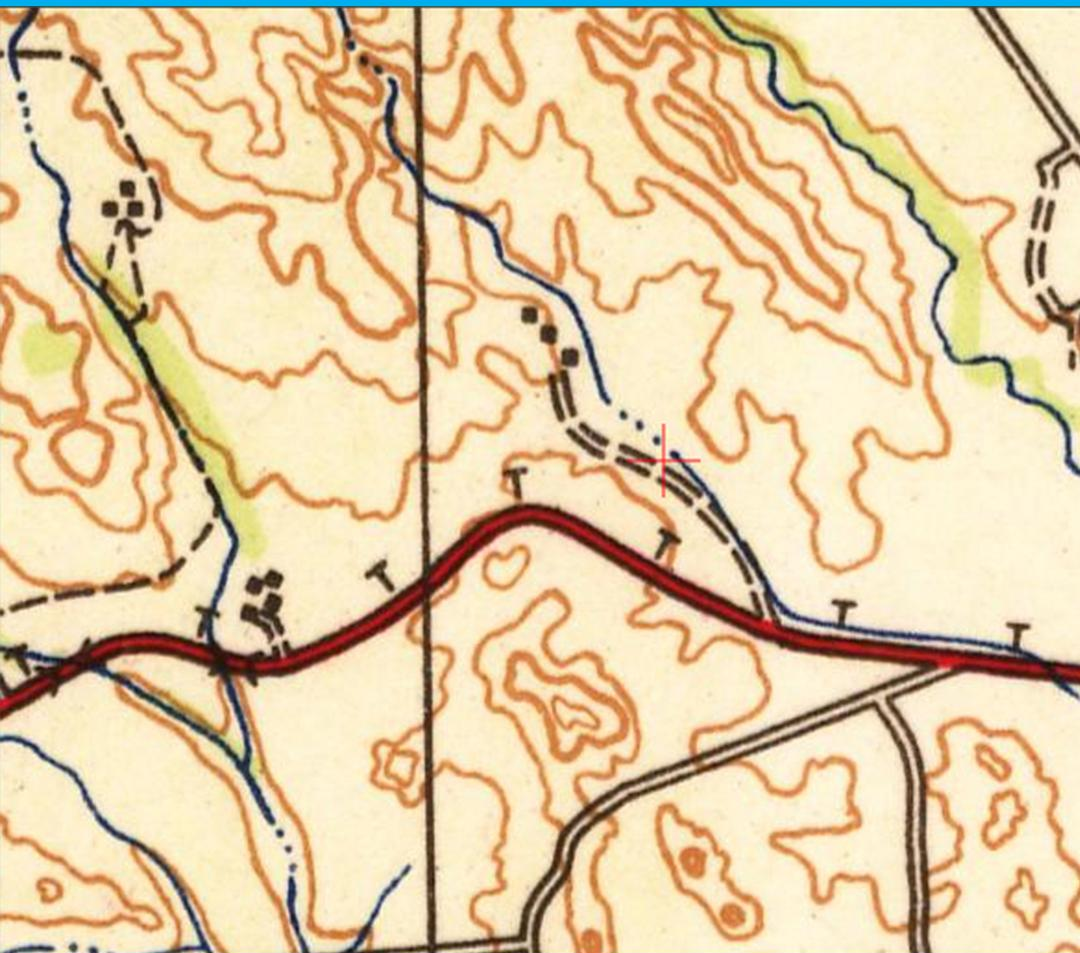
The **WPA** (Works Progress Administration) was created in 1935 in response to the **Great Depression**. As part of FDR's New Deal, the goal of the WPA was to employ millions of unskilled workers to learn and train for future jobs as well as carrying out a myriad of construction and architecture projects.

Winery Lake experienced an infancy period when a pond was dug by WPA workers in the 1930s for irrigational purposes. The pond expanded to an over 30 acre lake when the vineyard property was established in the 1960s. The lake is filled by runoff from a creek flowing down from **Milliken Peak**.



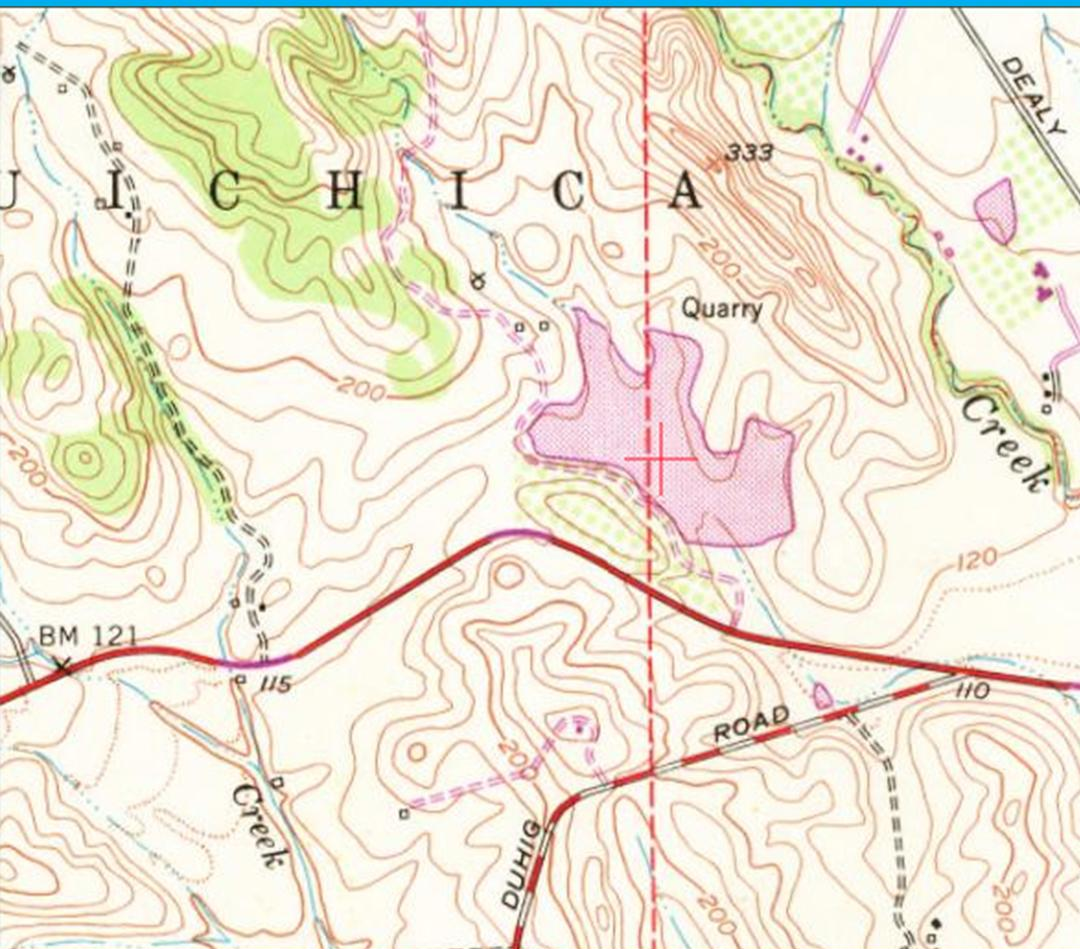
A survey of the future di Rosa site (the red crosshair) in 1902, notice there is no water on site except for two creeks on the outskirts.

U.S. Geographical Survey,
Historical Topographic Map Explorer



The di Rosa site in 1942, notice there are now two ponds (the dots along the blue line) and a stream connecting the two of them.

U.S. Geographical Survey,
Historical Topographic Map Explorer



A survey from 1951 with revisions (outlined in pink) from 1968. By the late 60s, Winery Lake had fully taken shape.

U.S. Geographical Survey, Historical Topographic Map Explorer



**View of Winery Lake in 2020
flanked by Gallery 1 to the west.**

**What is your favorite
lake to visit?**

**Post a picture of a
favorite lake memory
and let us know!**

@dirosaart or #dirosaart